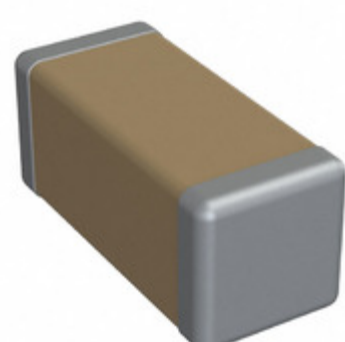


1808J1000150JDT



Images are for reference only.
See Product Specifications for product details.
Buy 1808J1000150JDT with confidence from
Component-World.HK, 1 Year Warranty



Part Number: 1808J1000150JDT
Manufacturer: Knowles Syfer
Description: CAP CER 15PF 100V X7R 1808
Data sheet: [MLCC High Reliability Datasheet](#)

RoHS Status: Lead free / RoHS Compliant
Ship From: Hong Kong
Shipment Way: DHL/Fedex/TNT/UPS/EMS

[Request For Quotation](#)

PRODUCT PARAMETER

Part Number	1808J1000150JDT	Manufacturer	Knowles Syfer
Description	CAP CER 15PF 100V X7R 1808	Lead Free Status / RoHS Status	Lead free / RoHS Compliant
Quantity Available	100629 pcs	Data sheet	MLCC High Reliability Datasheet
Category	Capacitors	Voltage - Rated	100V
Tolerance	±5%	Thickness (Max)	0.079" (2.00mm)
Temperature Coefficient	X7R	Size / Dimension	0.177" L x 0.079" W (4.50mm x 2.00mm)
Series	-	Ratings	-
Packaging	Tape & Reel (TR)	Package / Case	1808 (4520 Metric)
Operating Temperature	-55°C ~ 125°C	Mounting Type	Surface Mount, MLCC
Moisture Sensitivity Level (MSL)	1 (Unlimited)	Manufacturer Standard Lead Time	8 Weeks
Lead Style	-	Lead Spacing	-
Lead Free Status / RoHS Status	Lead free / RoHS Compliant	Height - Seated (Max)	-
Features	High Temperature	Failure Rate	-
Detailed Description	15pF ±5% 100V Ceramic Capacitor X7R 1808 (4520 Metric)	Capacitance	15pF
Applications	High Reliability		

Component-World.com is a Reliable Stocking Distributor of Electronic Components. We specialize in all Knowles Syfer series electronic components. We have 100629 pieces of Knowles Syfer 1808J1000150JDT in stock available now. Request a quote from electronics components distributor at Component-World.com, our sales team will contact you within 24 hours.
RFQ Email: info@Components-World.com

RELATED PRODUCTS

	Part#: 1808J1000150FFT Description: CAP CER 15PF 100V COG/NP0 1808	Manufacturers: Knowles Syfer	RFQ
	Part#: 1808J1000150KDT Description: CAP CER 15PF 100V X7R 1808	Manufacturers: Knowles Syfer	RFQ
	Part#: 1808J1000150GFR Description: CAP CER 15PF 100V COG/NP0 1808	Manufacturers: Knowles Syfer	RFQ
	Part#: 1808J1000150GFT Description: CAP CER 15PF 100V COG/NP0 1808	Manufacturers: Knowles Syfer	RFQ
	Part#: 1808J1000150FFR Description: CAP CER 15PF 100V COG/NP0 1808	Manufacturers: Knowles Syfer	RFQ
	Part#: 1808J1000150GCR Description: CAP CER 15PF 100V COG/NP0 1808	Manufacturers: Knowles Syfer	RFQ
	Part#: 1808J1000150JFT Description: CAP CER 15PF 100V COG/NP0 1808	Manufacturers: Knowles Syfer	RFQ
	Part#: 1808J1000150JCR Description: CAP CER 15PF 100V COG/NP0 1808	Manufacturers: Knowles Syfer	RFQ
	Part#: 1808J1000150FCT Description: CAP CER 15PF 100V COG/NP0 1808	Manufacturers: Knowles Syfer	RFQ
	Part#: 1808J1000150JFR Description: CAP CER 15PF 100V COG/NP0 1808	Manufacturers: Knowles Syfer	RFQ
	Part#: 1808J1000150KCT Description: CAP CER 15PF 100V COG/NP0 1808	Manufacturers: Knowles Syfer	RFQ
	Part#: 1808J1000150KFT Description: CAP CER 15PF 100V COG/NP0 1808	Manufacturers: Knowles Syfer	RFQ
	Part#: 1808J1000150JCT Description: CAP CER 15PF 100V COG/NP0 1808	Manufacturers: Knowles Syfer	RFQ
	Part#: 1808J1000150MDR Description: CAP CER 15PF 100V X7R 1808	Manufacturers: Knowles Syfer	RFQ
	Part#: 1808J1000150GCT Description: CAP CER 1808	Manufacturers: Knowles Syfer	RFQ
	Part#: 1808J1000150KDR Description: CAP CER 15PF 100V X7R 1808	Manufacturers: Knowles Syfer	RFQ
	Part#: 1808J1000150JDR Description: CAP CER 15PF 100V X7R 1808	Manufacturers: Knowles Syfer	RFQ
	Part#: 1808J1000150KCR Description: CAP CER 15PF 100V COG/NP0 1808	Manufacturers: Knowles Syfer	RFQ
	Part#: 1808J1000150KFR Description: CAP CER 15PF 100V COG/NP0 1808	Manufacturers: Knowles Syfer	RFQ
	Part#: 1808J1000150MDT Description: CAP CER 15PF 100V X7R 1808	Manufacturers: Knowles Syfer	RFQ

Related keywords for 1808J1000150JDT

Knowles Syfer 1808J1000150JDT	1808J1000150JDT distributor	1808J1000150JDT supplier	1808J1000150JDT price
1808J1000150JDT download datasheet	1808J1000150JDT datasheet	1808J1000150JDT stock	buy 1808J1000150JDT
Knowles Syfer 1808J1000150JDT	Syfer 1808J1000150JDT		